

Sediment of Chinese Honey

Katja Bohm

Chinese Honey Workshop

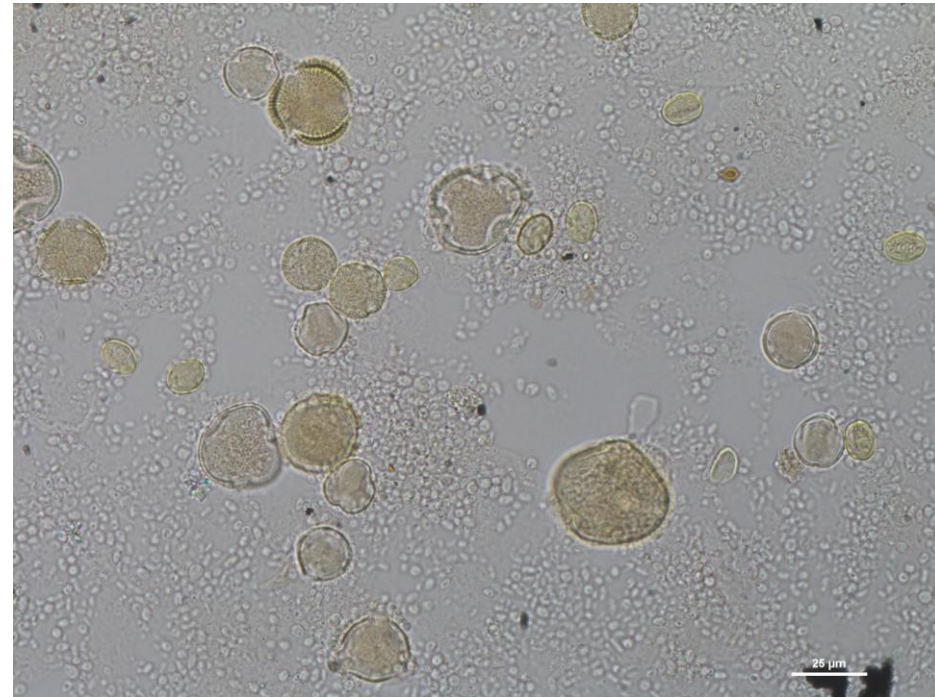
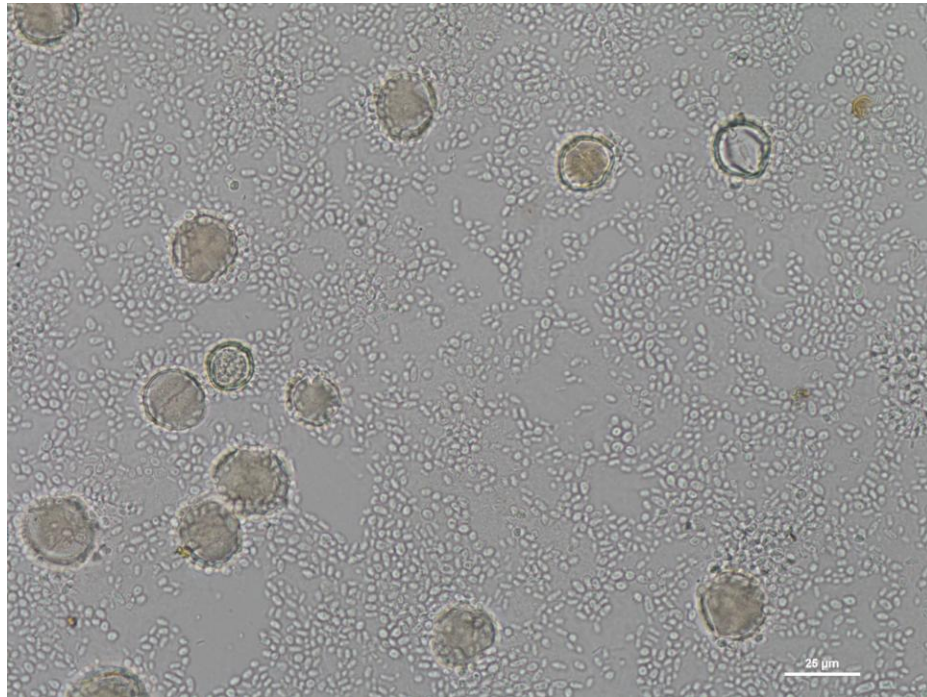
27th June 2016, Bologna, Italy



- I. Yeast
- II. Starch
- III. Honey atypical particles

I. Yeast

- Increased yeast content due to the different harvesting procedure



Investigation by Harald Rußmann, Handelslabor Dr. Wiertz /
Dipl.Chem. Eggert / Dr. Jörissen GmbH, Hamburg

(http://www.apiservices.com/artikel/hefen_und_glyzerin.htm)

Parameters for fermentation or stopped fermentation:

- Yeast content: > 500.000 / 10 g honey
- Glycerine content: > 300 mg/kg
- Sensory: corresponding for fermentation

Exception: Honeydew honey may show higher yeast contents

II. Starch



Valued Quality. Delivered.

Magnification: 400x

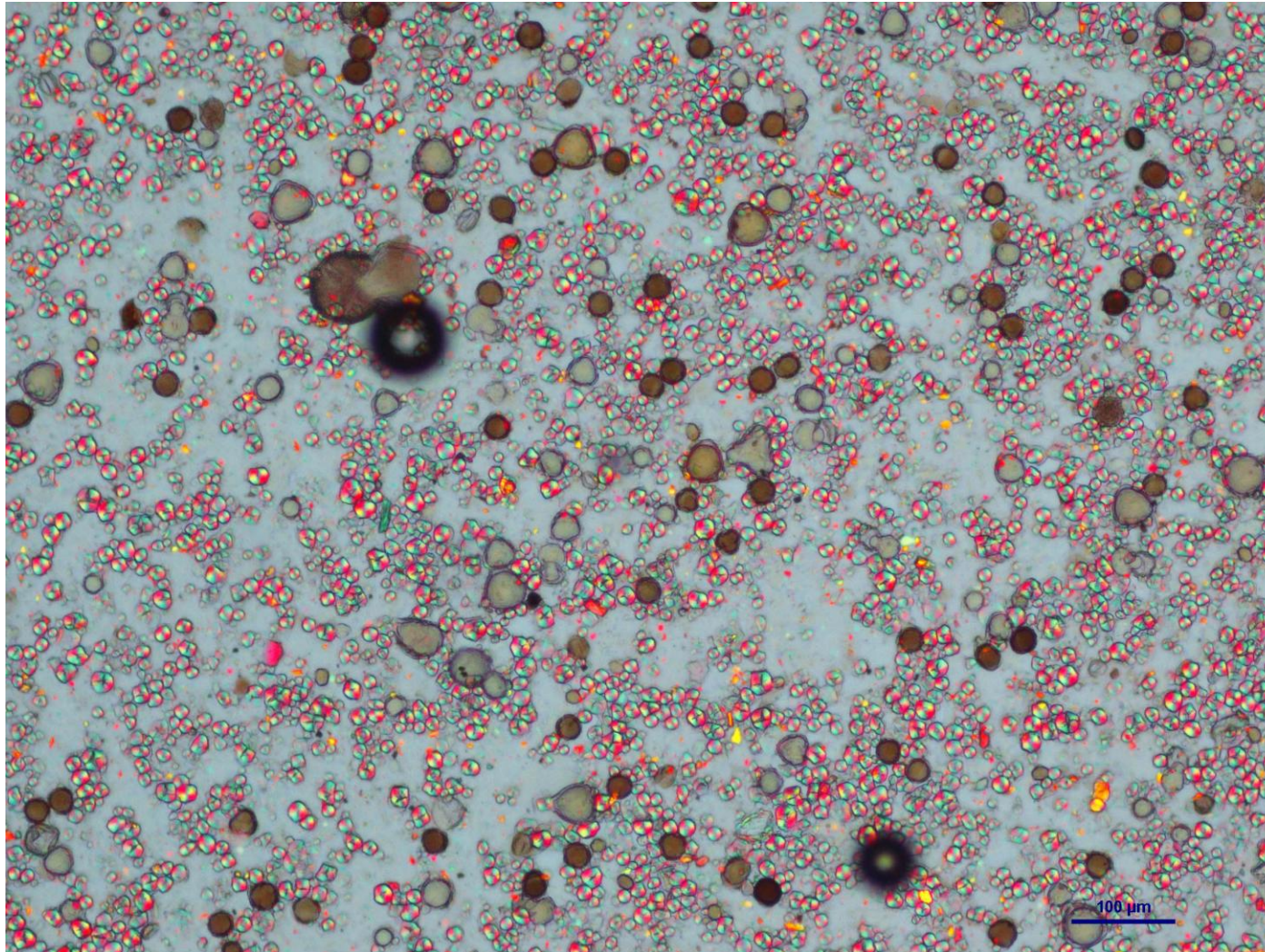


II. Starch

Intertek

Valued Quality. Delivered.

Magnification: 100x,
with pol filter

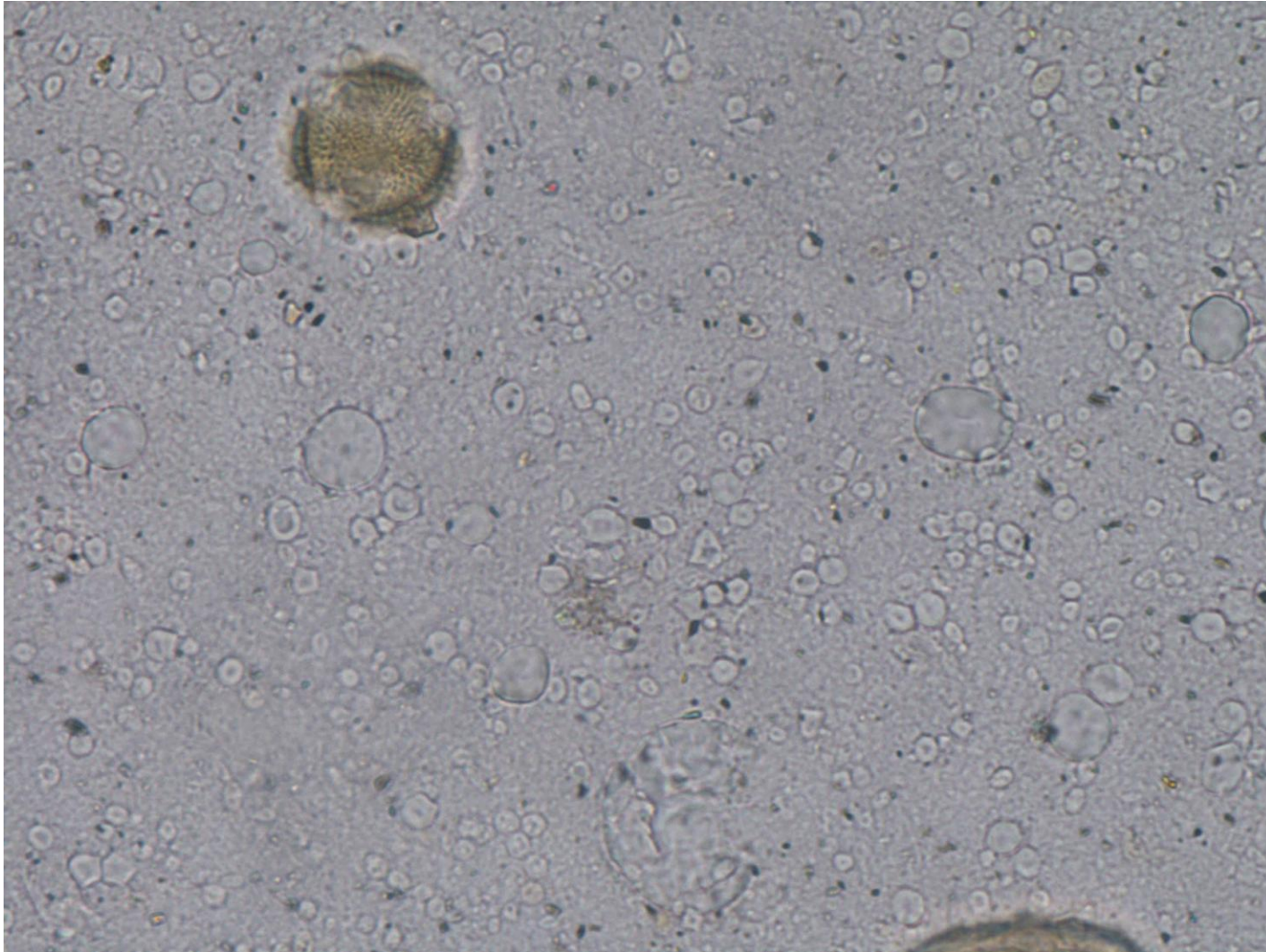


II. Starch



Valued Quality. Delivered.

Magnification: 600x

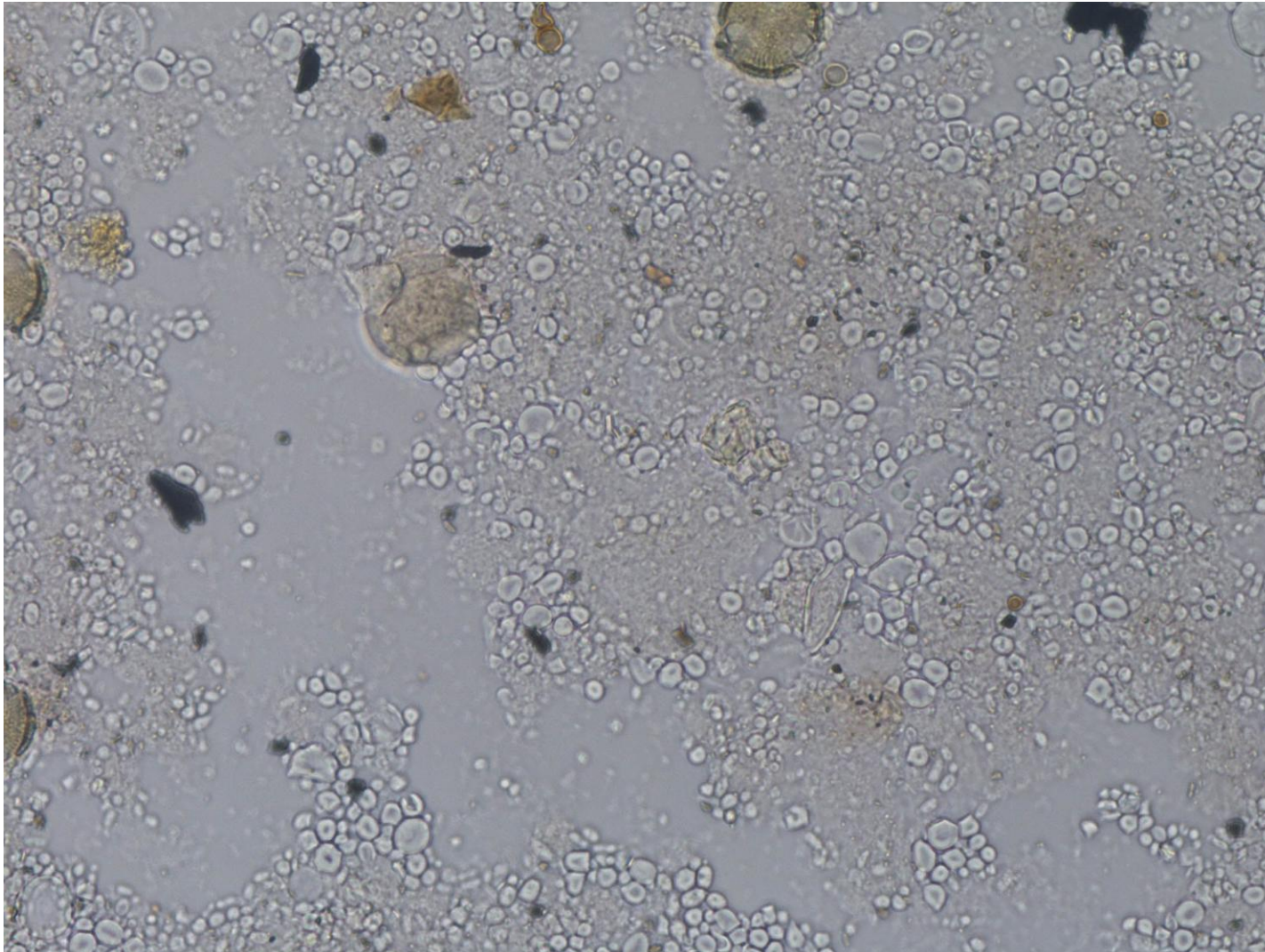


II. Starch



Valued Quality. Delivered.

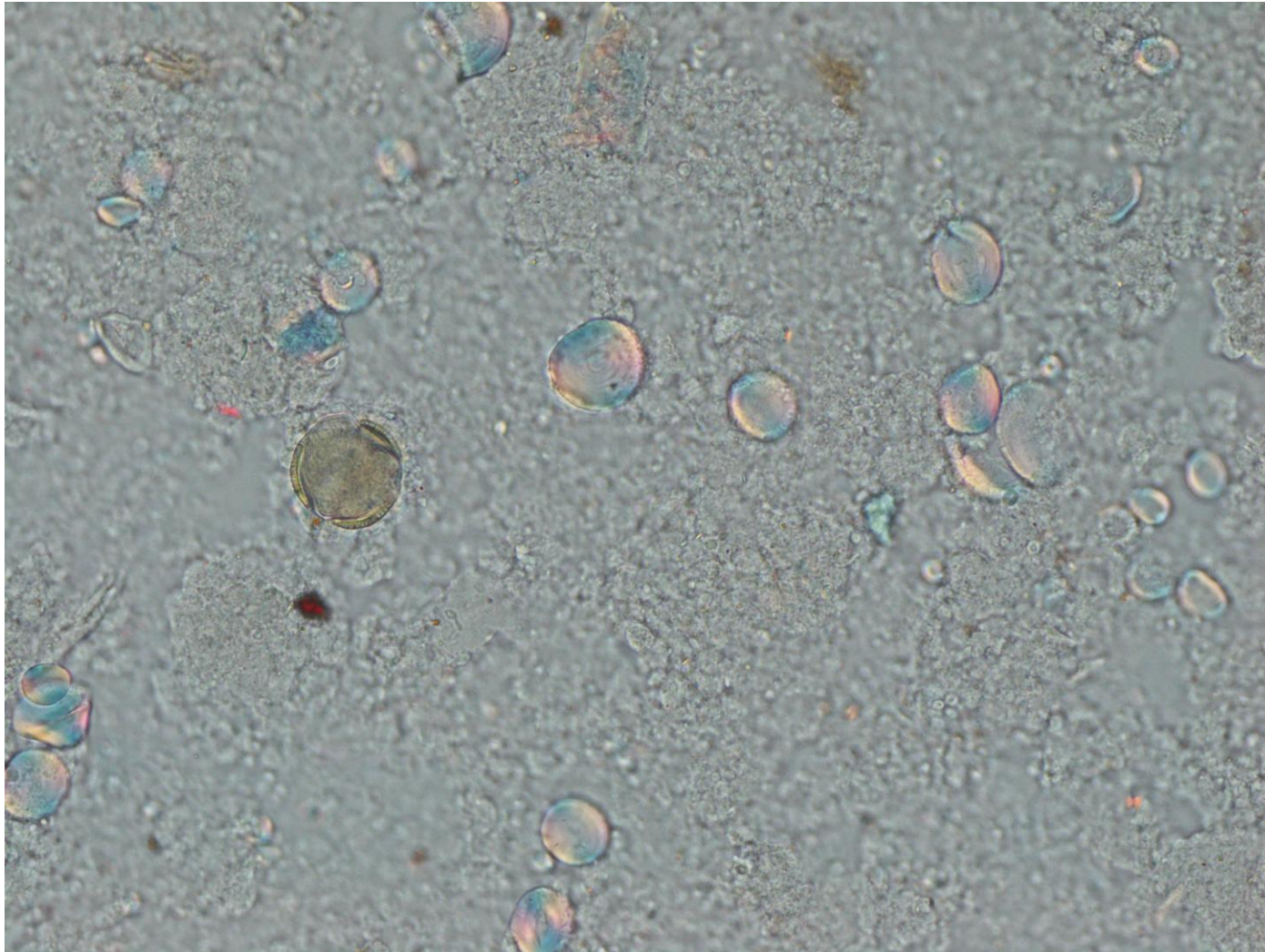
Magnification: 400x



II. Starch



Valued Quality. Delivered.



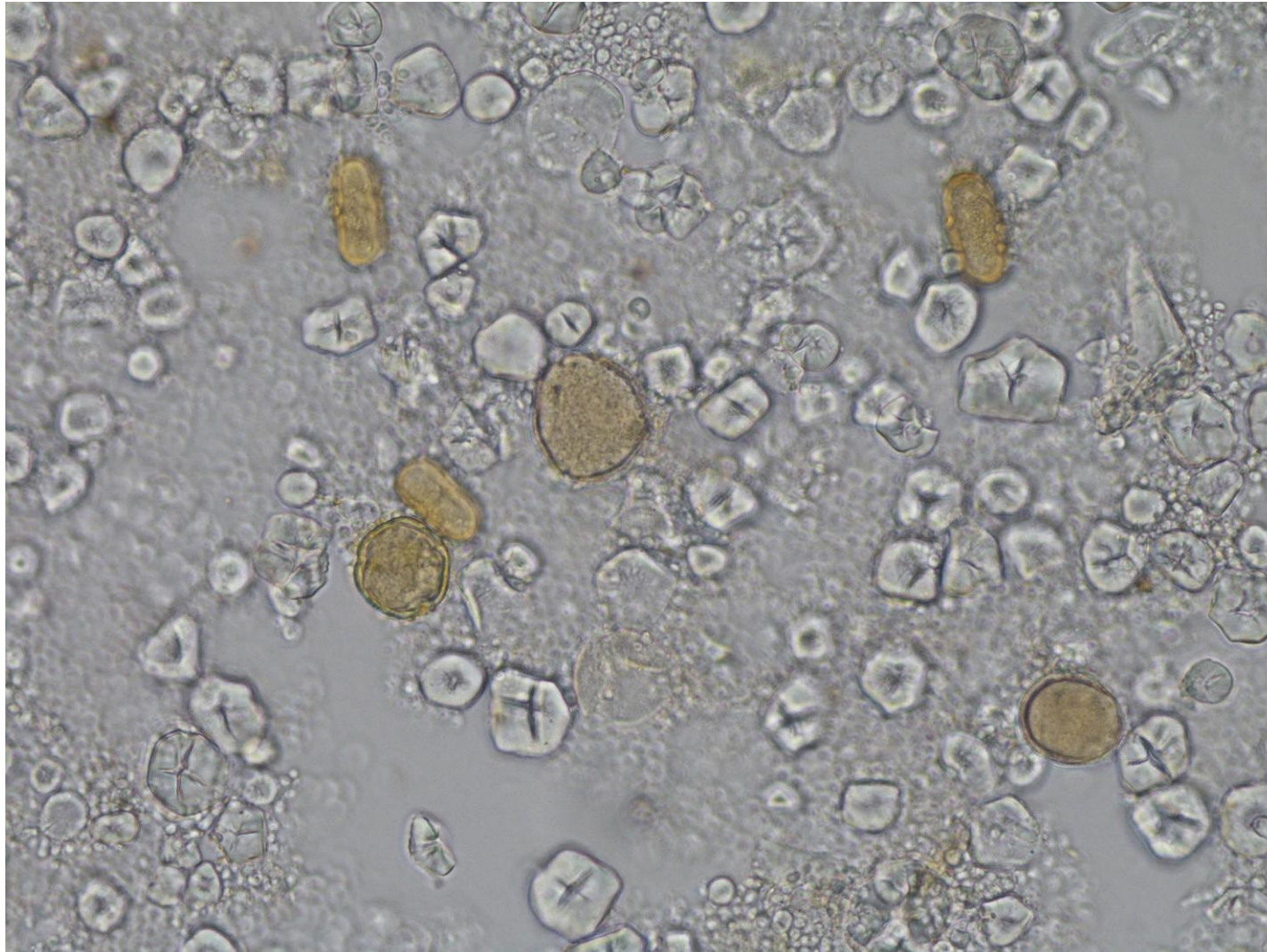
Magnification: 400x,
with pol filter

II. Starch



Valued Quality. Delivered.

Magnification: 400x



II. Starch



Valued Quality. Delivered.

- no official method: starch grains in relation to the pollen content
- no absolute content
- different results for under- and over-represented honeys
- according to our experience: “normal” starch level in honey 0 - 10 %
- no legal limit: in Germany tolerance range 30 %
- contents > 30 % does not correspond to EU honey directive

II. Starch



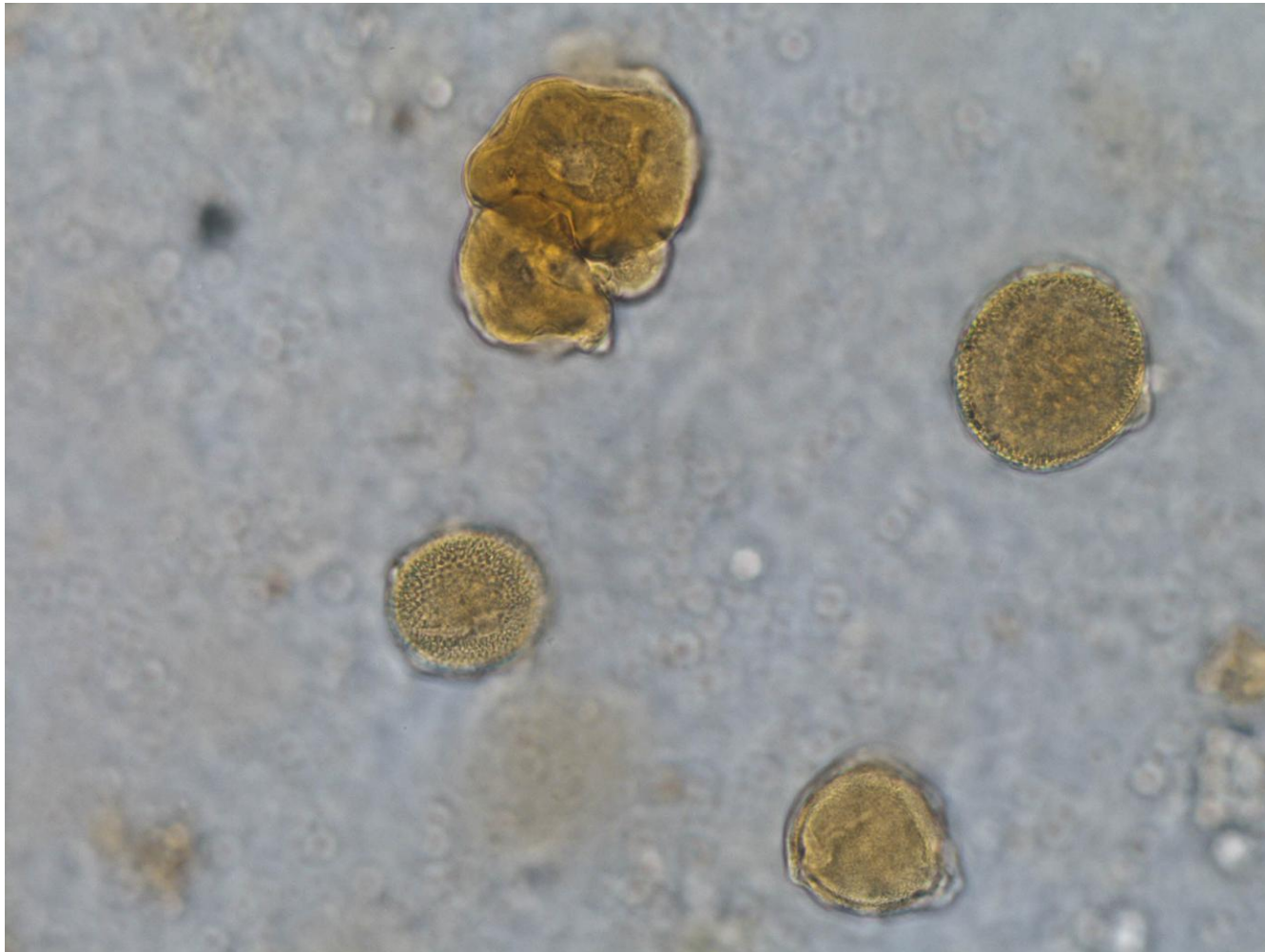
Valued Quality. Delivered.

High starch contents can be caused by:

- Adulteration of honey with syrups of starch hydrolyzates
- Honeybee treatments with drugs (with starch as a carrier basis)
- Feeding of honeybees
- Entry of starch by the honeybees

III. Honey atypical particles

- brown or white particles without any structure and in different sizes



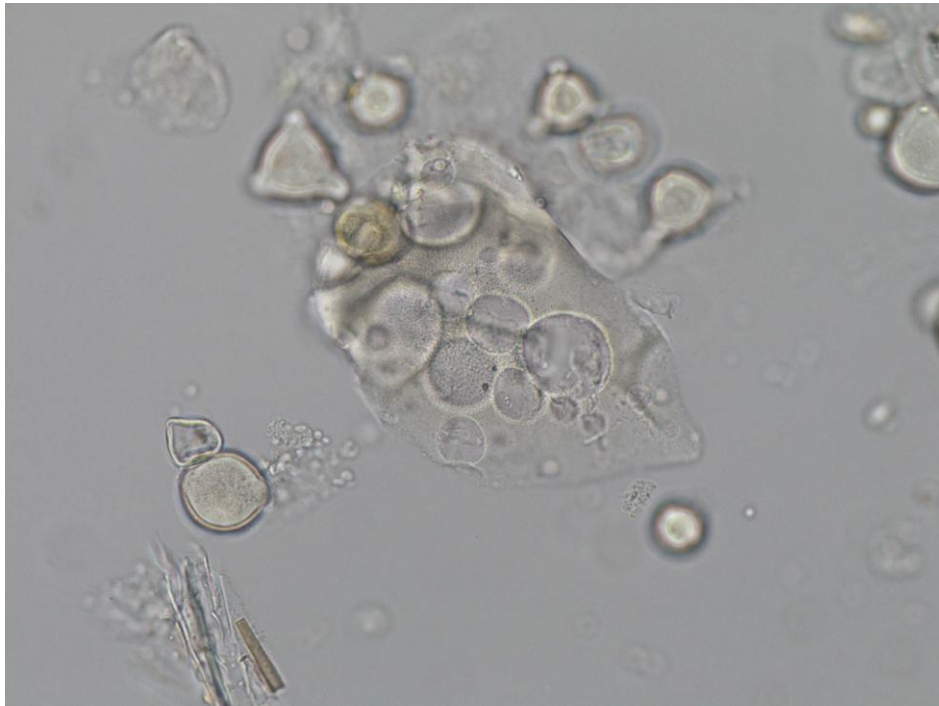
Magnification: 400x

III. Honey atypical particles



Valued Quality. Delivered.

Magnification: 400x

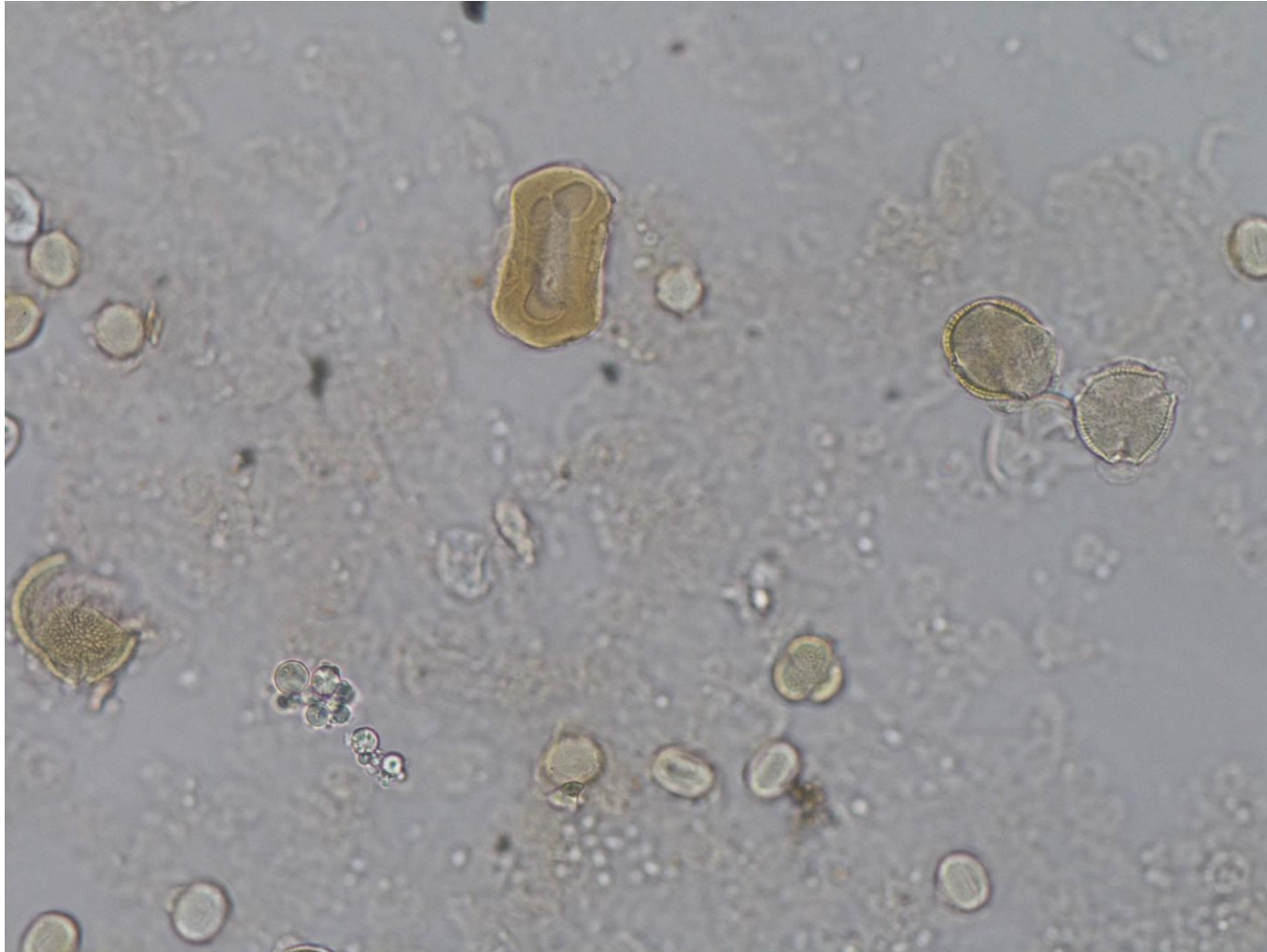


III. Honey atypical particles



Valued Quality. Delivered.

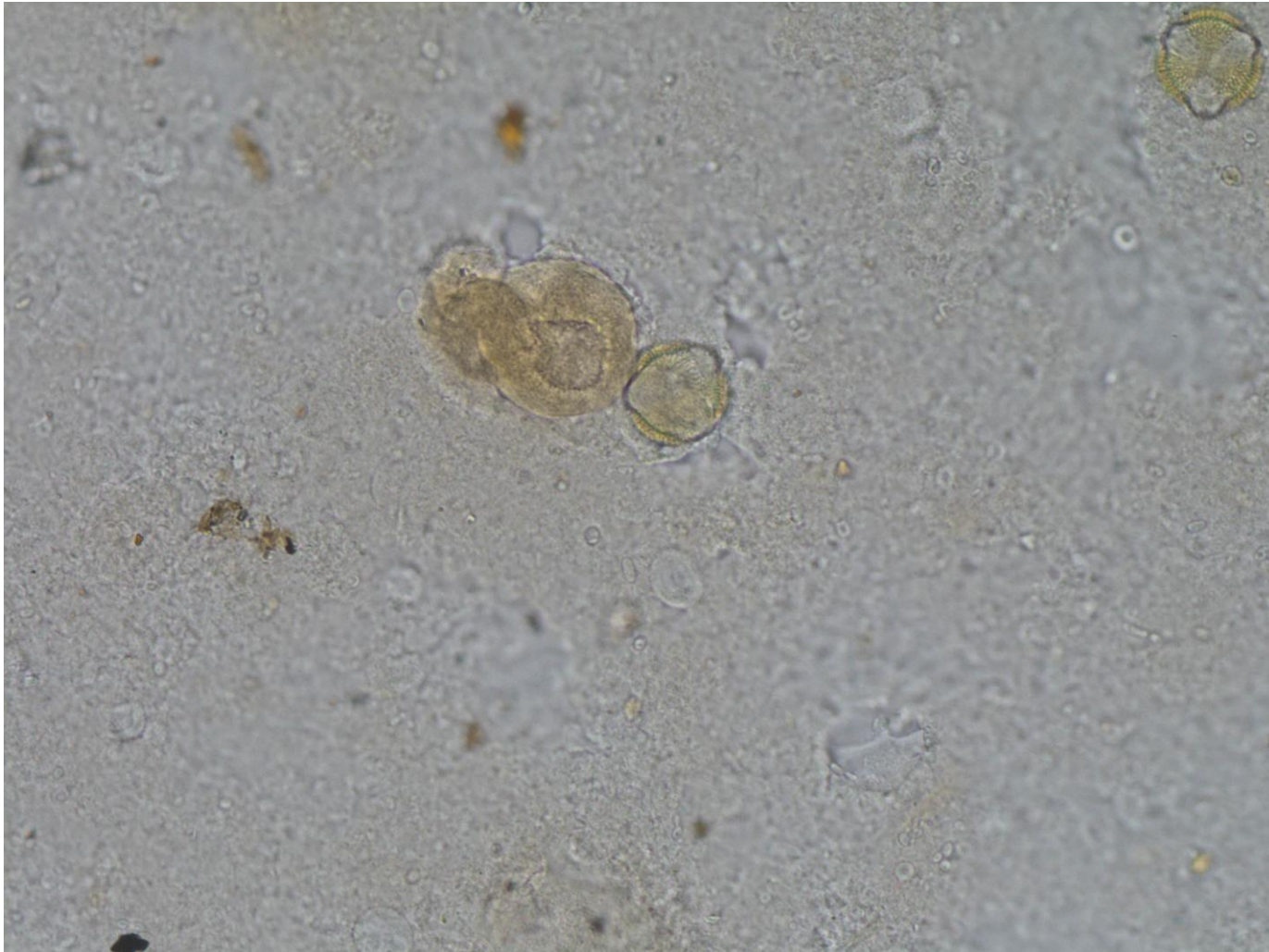
Magnification: 400x



III. Honey atypical particles



Valued Quality. Delivered.



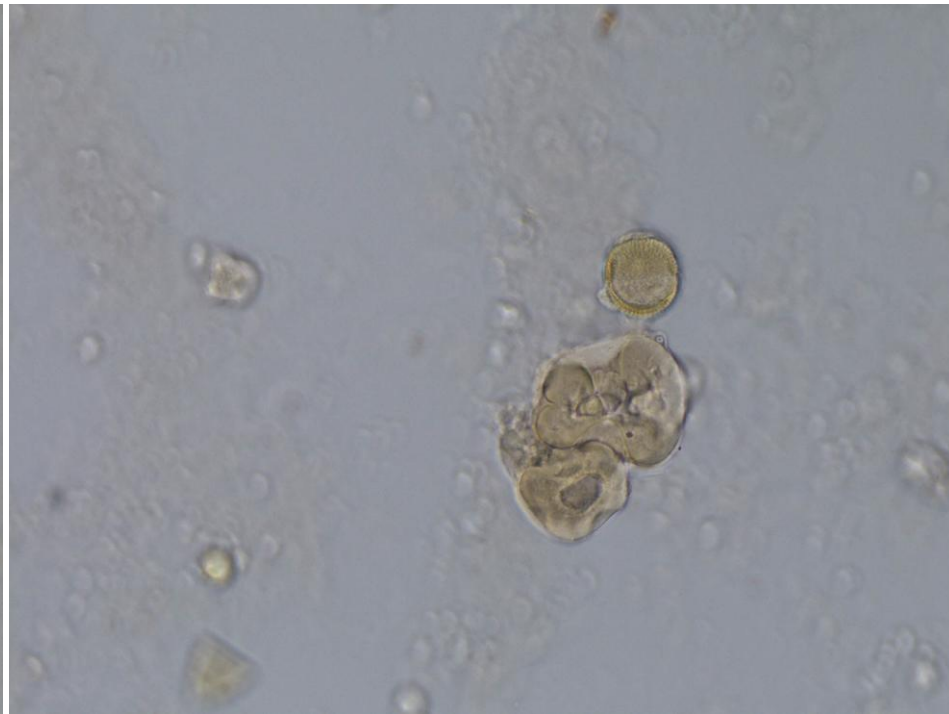
Magnification: 400x

III. Honey atypical particles



Valued Quality. Delivered.

Magnification: 400x

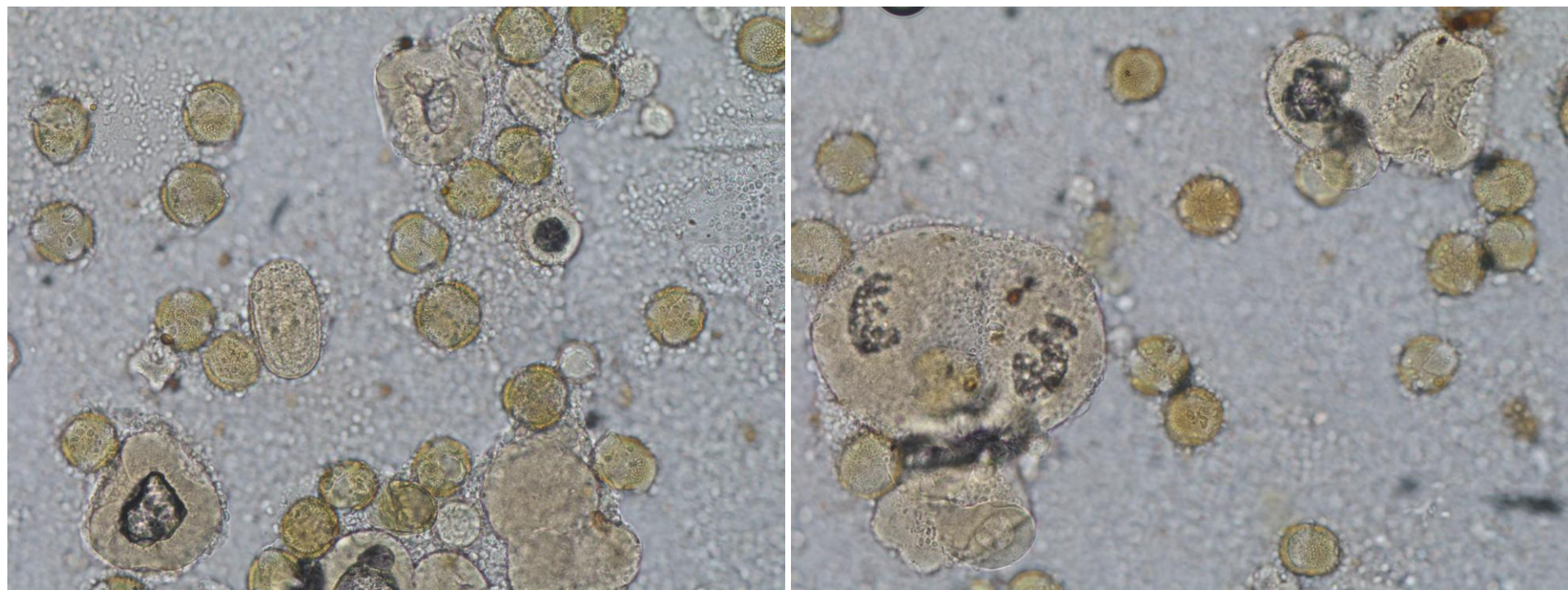


III. Honey atypical particles



Valued Quality. Delivered.

Magnification: 400x



Thank you for your attention!